



ACS
INTERNATIONAL
SCHOOL
HILLINGDON

SENIOR SCHOOL

A photograph of a fencer in a white uniform and mask, holding a foil. Another fencer's arm is visible in the foreground, also holding a foil. The background is a stone wall.

THE
WORLD
NEEDS
NEW
THINKING.
GET
READY.



MARTIN HALL
HEAD OF SCHOOL

HELLO AND WELCOME TO ACS HILLINGDON, WHERE INNOVATION INTERTWINES WITH HISTORY AND STUDENTS FLOURISH IN A WARM, PERSONAL SCHOOL ENVIRONMENT.

ACS Hillingdon is a beautifully green and welcoming campus close to central London, bursting with innovation and enterprise. We're home to around 570 students, aged 4 to 18, representing over 50 nationalities, taught and supported by 150 teachers and staff members. Our global perspective reflects our world-renowned curriculum that builds on the very best of leading education standards, giving our students the flexibility to tailor their studies from a wide range of options.

Our dynamic mix of curricular, co-curricular and experiential learning activities ensures that students at ACS Hillingdon develop a firm knowledge and understanding, with the skills that will enable them to thrive in the years ahead. We're proud of both our academic programmes and our commitment to visual arts, drama and music, all of which are an integral part of our curriculum, ensuring that our students are ready for whatever comes next in their lives.

We have superb facilities that support and enable our passion for innovation, including a well-equipped Science Centre with seven new labs, our "Think Tank" and inspiring facilities for students to develop their understanding of coding and robotics. Physical activity, outdoor learning, service, environmental projects and our Duke of Edinburgh Award programme all encourage Hillingdon students to be adventurous and try new things, reflecting our belief that success outside the classroom is just as important as success within.

READY FOR A WORLD THAT KEEPS CHANGING.

OUR APPROACH TO LEARNING

Whether you know us a little, a lot, or not at all, there are certain qualities our current students and parents have come to expect that enable us to stand out. Selecting the right fit for your child has never been more important and challenging. As an independent, well-resourced school, we offer the time, space, facilities and expertise to deliver an education that is relevant to 21st century challenges and aspirations.

We will always champion what makes us special:

- The quality of our world-class curriculum, including the International Baccalaureate Diploma
- Prestigious academic accreditations
- The qualifications and subject expertise of our teachers
- The breadth and depth of our co- and extra-curricular programmes
- Outstanding academic, extra-curricular and sports facilities
- A belief that school life must offer more than lessons alone
- The knowledge that privilege has a duty to act and help those less fortunate or in need
- The Vision and Values to guide everyday school life through well-defined student learning outcomes
- A vibrant, international and multicultural community spirit
- Parent Survey results that tell us we are a very happy school
- A holistic approach to education that appeals to both local and international families





READY TO QUESTION.

PROGRAMMES FOR AGES 11–16

At the heart of our educational approach is a commitment to get our students ready for whatever comes next. We achieve this by balancing the extensive opportunities we offer outside of the classroom, with the best academic programmes from around the world, including the renowned International Baccalaureate Diploma.

Our curriculum draws from leading educational standards from around the world. Our students study all the core subjects you would expect from a leading school – Maths, English, Science and Languages – plus an extensive range of electives. We do not offer GCSEs or follow the national curriculum. Because of this, we see our students benefiting from sitting fewer exams, as we prefer them to achieve a deeper level of subject knowledge and understanding beyond simply learning for a test.

We want our students to problem solve and think critically, persevere, have integrity, take risks in their learning, be creative and active, care about their local, national and international, community and take action to make life better. We endeavour to make these transition years a journey of discovery, culminating in confident and versatile young adults.

We align our curriculum to rigorous standards, preparing students to undertake the renowned International Baccalaureate Diploma. Students are also encouraged to participate in a diverse range of co-curricular activities including Drama, Music, Art, Health, PE and Sports, and to choose from a variety of electives and clubs from Model United Nations to Coding. The responsibilities of community service and leadership play a vital role in offering a complete student experience.

READY TO EXCEL.

ACADEMIC PROGRAMMES, AGES 16–18

We offer a comprehensive and rigorous curriculum, built upon leading international standards, and adapted to the needs of our diverse student body.

The IB Diploma Programme (IBDP) is an academically challenging programme that ensures students aged 16–18 are ready for success at university and beyond.

It is:

- Broad and flexible, requiring six subjects which can be configured to differentiate and maximise each student's strengths
- A programme that encourages university-level skills, and the development of skills outside of the classroom
- More likely to get students into a Russell Group university, where they are more likely to earn a first-class degree*

*Analysis by the Higher Education Statistics Agency.

IB and A Levels grading compared

The percentage of students achieving a Diploma each year has remained constant over the last decade which indicates that, unlike the A Levels, there has been little grade inflation.

- The highest possible score for the IB is 45 points – only 0.2% of students worldwide are able to achieve this each year.
- According to the UCAS tariff, 45 points is the equivalent of five grade A* at A Levels, 40 points is the equivalent of four grade A* at A Levels and 35 points is equivalent to two grade A* at A Levels, and one grade A

Course requirements in two parts

- **Subject Groups** – students take six subjects, three at Higher, and three at Standard Level. They must take maths, science, studies in language and literature, language acquisition, individuals and societies, and an optional arts or another from the first five categories

- **The Core** – contains three elements: Theory of Knowledge explores the foundations of knowledge and introduces students to university-level thinking; the Extended Essay is 4,000-words of self-directed research; and Creativity, Action and Service requires fixed hours engaged in artistic, sporting and/or voluntary work

IB Career-related Programme

The IBCP incorporates the vision and educational principles of the IB into a stand-out programme specifically developed for students who want greater career-related learning.

- Importantly, the IBCP prepares students for an ever-changing world of work, asking them to consider new perspectives, engage in learning that makes a positive difference and develop both academic and practical skills
- The programme's three-part framework comprises career-related work, the study of two IB Diploma courses, and the IBCP Core that connects the chosen Diploma courses directly with career-related studies
- As part of the IB Career Programme, we will be running school-based Film and Theatre courses alongside the LAMDA PCertLam and Grade 8 programmes. These courses will be offering core academic programmes in conjunction with industry level practical skills-based classes, which include costume, make-up and prosthetics, staging, sound design, and VFX and animation

Advanced Placement Programme

Our broad curriculum also incorporates Advanced Placement courses, which are widely accepted by universities in the US, UK and Canada. In addition, we offer the prestigious AP Capstone Diploma which helps students develop key academic skills, enabling them to become confident, independent thinkers and problem solvers.

UK UNIVERSITIES SCORE THE IB OVER A LEVELS

In a recent survey, UK university Admissions departments were asked how well students performed in the following qualities:



*The numbers represent the percentage who agreed or strongly agreed.

READY FOR THE FUTURE.

THROUGH EXPERT UNIVERSITY GUIDANCE

We invest the time and expertise to ensure every student finds the right fit for their future university studies. Fit is defined as meeting the academic, emotional, social, geographical and financial needs of the student. This attention to detail improves a student's likelihood of graduating from a chosen university, as well as attaining satisfaction and success in their chosen field of work.

We have two full-time University Counsellors who ensure our students experience a successful transition out of school, while providing a wide-range of expert support along the way:

- Researching university options
- Essay/personal statement writing
- Career path selection
- Standardised test skills
- Financial aid/scholarship advice
- Meeting university representatives during college visits and fairs

Recent top-tier placements

UK Cambridge, Imperial, King's, LSE, UCL, Exeter, Birkbeck, Birmingham, Edinburgh, Leeds, Queen Mary, Manchester, Nottingham, Southampton, Surrey, Warwick, York.

USA UCLA, Notre Dame, Texas A&M, New York, Arizona State, Boston, Elon, Northeastern, Pepperdine, Syracuse, Miami, Washington State.

Rest of the World Bocconi, Amsterdam, Groningen, McGill, Meiji, British Columbia, Ottawa, Toronto, Waseda

“

Our daughter
has come alive
academically
while attending
Hillingdon.

PARENT



READY TO CONTRIBUTE.

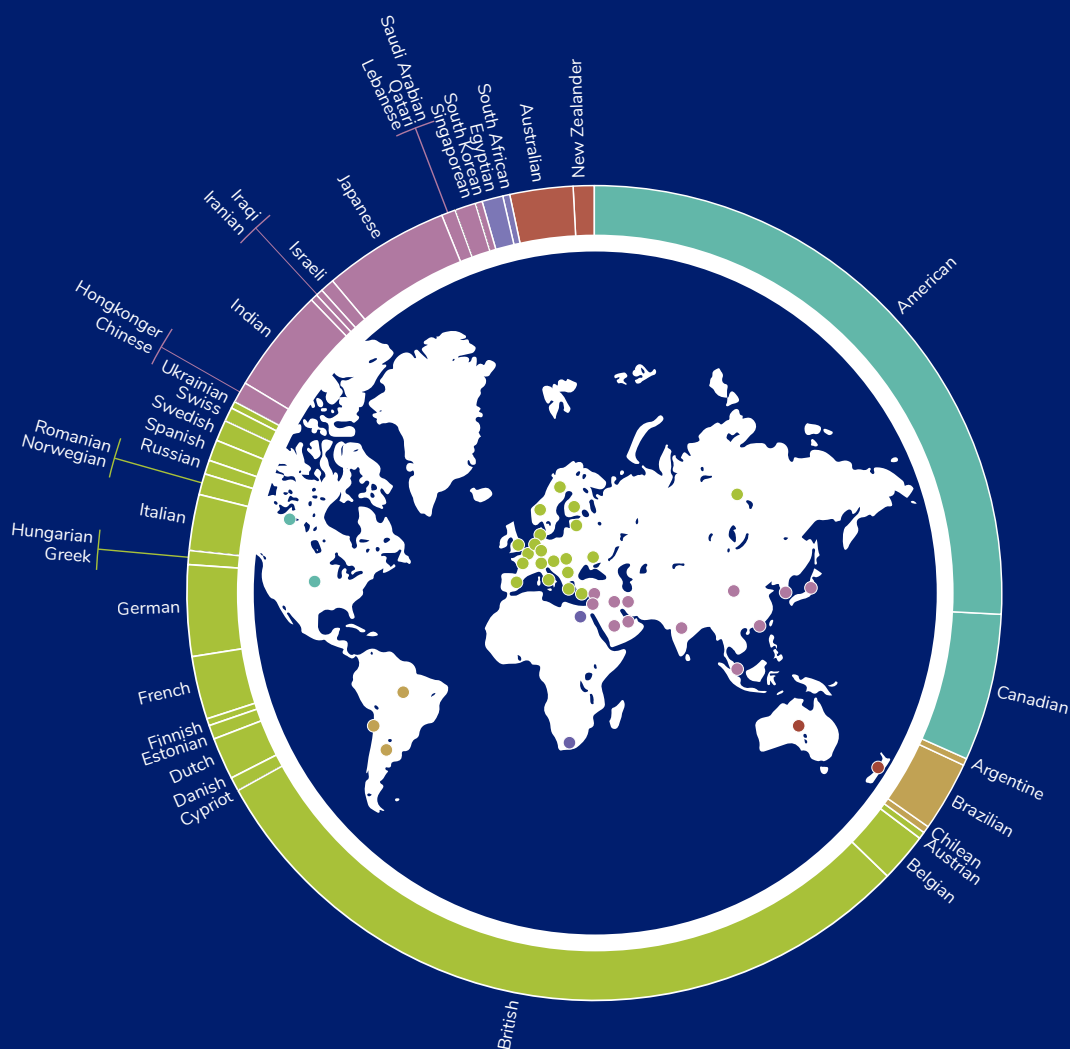
TODAY'S LEARNERS, TOMORROW'S LEADERS

We believe a rich school experience should include opportunities – both in and outside of the classroom – that expand a student's horizon. We believe the perfect balance to a rigorous academic curriculum is an equal measure of co- and extra-curricular participation.

From basketball to football, Model United Nations to drama productions, choir to orchestras, we have something to increase the capabilities of all our students. With expert facilitators, students perfect known skills, discover new interests, and quickly find that challenges are often the most rewarding forms of motivation.

We go out of our way to be a community that engages with the world around us, both locally and globally. Staff, parents and students turn compassion into direct action when it matters most, underlining our responsibility and ability to make things better for those less fortunate or in distress.

This is best highlighted by our outreach programmes to countries such as Kenya, where students work to improve local school communities.



GLOBAL PERSPECTIVE

Our students and staff come to us from all over the world. The result is a wonderfully open-minded, outward-looking culture that celebrates international diversity and harnesses different perspectives.

ACS Hillingdon's global outlook attracts expat and local families who want to ensure their children are ready to make a difference and contribute to society. Internationalism and our common humanity are at the heart of this philosophy. We are intensely proud of our multicultural identity and commitment to diversity and choice. We celebrate the things that make us different, not because they are fashionable but because they make the world a better, more dynamic place.

3
SEASONS

43
COMPETITIVE
TEAMS

10
SPORTS*

*FOOTBALL, CROSS COUNTRY,
SWIMMING, VOLLEYBALL,
BASKETBALL, SOFTBALL, RUGBY,
TENNIS, BASEBALL AND
TRACK AND FIELD.



READY TO DREAM, INNOVATE AND CREATE.

TOP EDUCATIONAL FACILITIES

Providing a great all-round education takes an amazing range of facilities. That is why we have invested £10m over the past five years ensuring ACS Hillingdon remains an outstanding educational environment. Our historic campus features:

- State-of-the-art IT labs, libraries, classrooms (both in and outdoors)
- Art Studios
- An outstanding new Science Centre to advance student research, innovation, curiosity, and achievement
- Recording and Music Centre
- Dedicated Drama space and stage
- Refurbished libraries, expanded learning spaces, classrooms and resource centre

TOP SPORTING FACILITIES

We offer an outstanding range of quality sports facilities, including:

- All-weather playing field
- All-weather tennis and basketball courts
- Multi-purpose gym
- Off-site facilities for:
 - Football
 - Rugby
 - Swimming
 - Track and Field

READY FOR A FUTURE FULL OF OPPORTUNITY.

BURSARIES

ACS schools is a registered charity with the mission of advancing education for all. As part of our philanthropic goals we offer financially assisted programmes in the form of bursaries and scholarships. Our bursary programme enables us to offer places to talented students who would benefit from our world-class education but whose family circumstances make it difficult to meet our usual fees.

These financial awards range from 10% to 100% of our full fees. All bursaries are means-tested, with each award dependent on the student's individual circumstances. In line with our values, we look for students with enquiring minds, an international perspective and a strong desire to make a difference.

We offer Middle School bursaries for students aged 11 or 13 (Grades 6 or 8), and High School bursaries, including the International Baccalaureate Diploma (IBDP), for students aged 16 (Grade 11). Students applying for the IBDP bursary should display the ability to benefit from an academically rigorous programme.

Our criteria for awarding bursaries

We welcome applications from parents who believe their child will benefit from our

international curriculum and who will make a real contribution to life at ACS Hillingdon. We ask that candidate pupils are resident in the UK and have the right to remain (subject to complying with full immigration laws and regulations). Following an application, we assess the student information and financial data provided and reach a decision in the March prior to the academic year of entry.

Calculating the bursary award

Bursaries are awarded for up to seven years and range from 10% to 100% of the full tuition fees. In exceptional circumstances, these awards can also include additional school-related expenditure so students can participate in every aspect of school life. We calculate the size of each bursary based on an assessment of parental income and other financial assets, so we ask for appropriate documentation as part of each application. We review bursary awards on an annual basis to ensure they reflect any changes in parents' financial circumstances.

How to apply for a bursary at ACS Hillingdon

If you would like further information on our bursary programme, please visit www.acs-schools/bursaries, call the team on **+44 (0) 1895 818402** or email hillingdonbursaries@acs-schools.com





JOINING THE ACS FAMILY

Whether you know exactly what you are looking for in a school, or would simply like an informative chat, our friendly and professional team are here to help.

One of the key differences to our approach is that we offer a rolling admission process. This means students of all ages join us at any point during the year, with more local children arriving at 11, 13 and 16 and staying with us until they leave for university. Our selection criteria is also more enlightened, with academic administrators and Admissions reviewing each candidate's past school records, references, questionnaires and any standardised testing scores, in order to fully appreciate their character and potential.

Through this lens we are proud to enrol students from the local area, alongside those from around the world. What unites them is a desire to learn in an international setting in order to thrive in

a more globalised world. Whatever your story, we have the sensitivity and expertise to help you every step of the way.

One thing we do recommend to all prospective students is come visit us first and see for yourself what makes us stand out. Where possible, we encourage visits during a school day. If this is not possible, we can arrange weekend tours on an appointment basis.

If you want to find out more, our offices are open Monday to Friday, 8.30am to 5pm, or visit our website acs-schools.com/hillingdon.

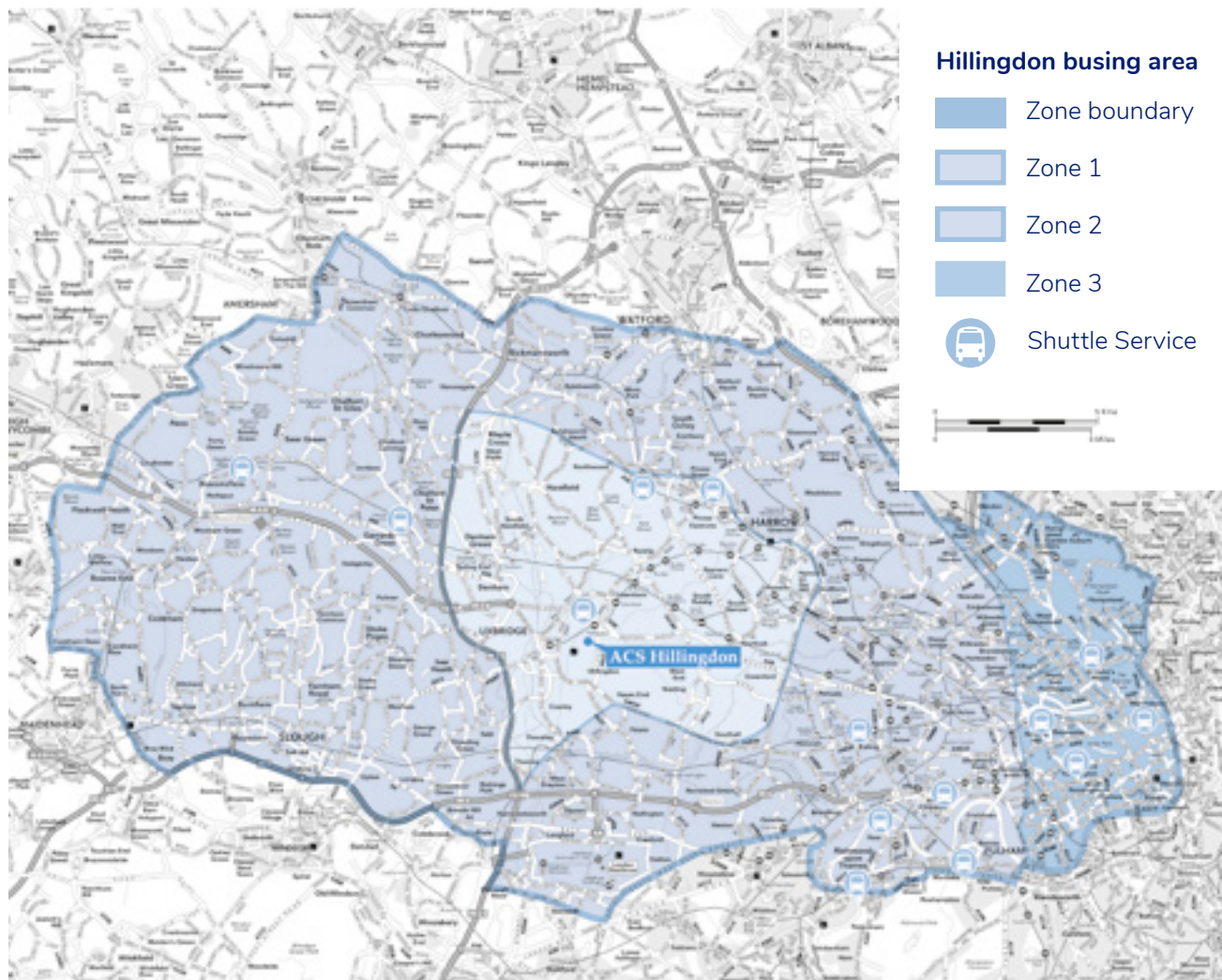
We look forward to meeting you in the near future.

LOCAL BUSES

Because we understand the many challenges facing both local and relocating families, the ACS Hillingdon Transportation Department will make every effort to arrange busing for your children from their first day of school. ACS Hillingdon operates two types of service (door-to-door and shuttle), across two busing zones, with fees set according to distance from school. Zonal areas are indicated on the map.

Average one-way journey times

- Central London: 45 minutes
- Gerrards Cross: 35 minutes
- Middlesex: 40 minutes
- Richmond: 45 minutes



ACS INTERNATIONAL SCHOOL
HILLINGDON
Hillingdon Court,
108 Vine Lane,
Hillingdon, Middlesex,
UB10 0BE, England

+44(0) 1895 818402
hilladmissions@acs-schools.com

